

## SPECIFICATIONS

<b>Type</b>	Double Sided	
<b>Where to fix</b>	Freestanding	
<b>LED Source</b>	LED Modules SA 2398 Equivalent from SA-LED Australia	
<b>Power Source</b>	Suitable Power Supply from SA-LED Australia	
<b>Dimension</b>	Length Height Deep	Any Size Up to 2,000mm 400mm <small>*Post deep : Max 200mm</small>
<b>Face</b>	Flexface Kedar Finish	
<b>Return</b>	Aluminum Extrusion Bar SA LM165 from SA-LED Australia - Mill(2B) Finish - 2Pac Spray (Other colours) - Power Coating	
<b>Back</b>	ACM or Equivalent Material	
<b>Cover Size</b>	88mm Half Cover x 5mm Trim SA SC88 from SA-LED Australia	

- Price do not include acrylic sheets.
- Price do not include packaging and delivery
- Artwork has to be provided by the client.
- Please make sure to include the original artwork files that is:
  - ✓ 1:1 Scale
  - ✓ 100% Vector(\*.eps)
  - ✓ PDF File format (\*.pdf)
  - ✓ CorelDRAW (\*.cdr, \*.dxf)

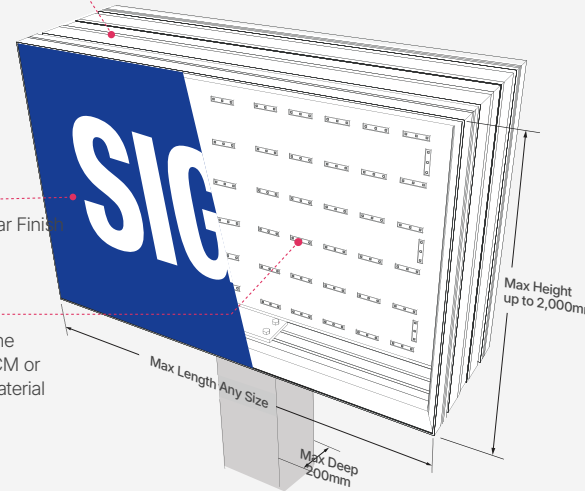
## 3D STRUCTURE

### Front View

**Return**  
Aluminum

**Face**  
Flexface Kedar Finish

**LEDs**  
Installed on the fabricated ACM or Equivalent Material

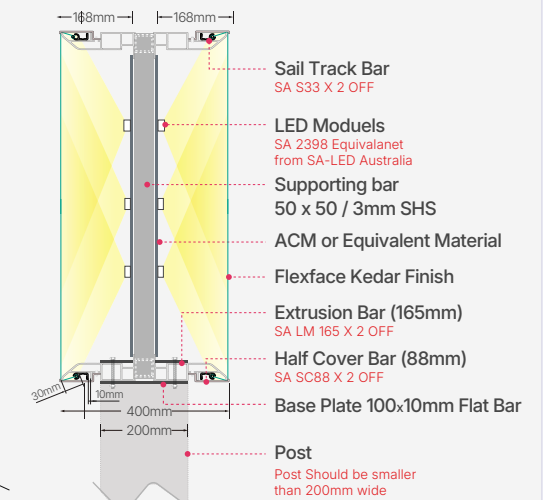


### Side View

\*Sail Track with Kedar edging

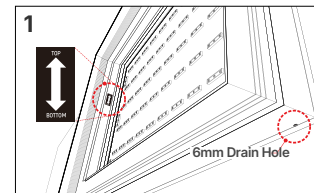


### Side View : Freestanding

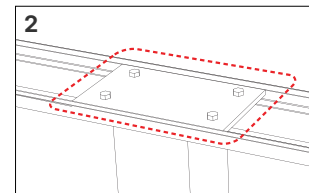


\*All LED modules, power suppliers, extrusion bars, angle trims and other bars can be purchased in [www.SA-LED.com](http://www.SA-LED.com)

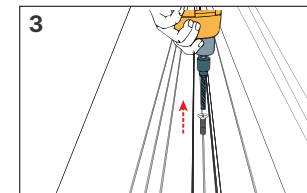
## INSTALLATION GUIDE



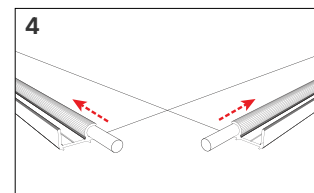
TOP & BOTTOM indicative sticker on the side, predrilled 6mm drain hole on the bottom.



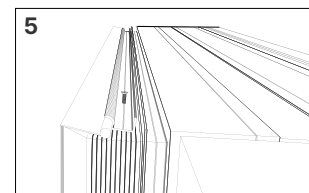
Additional fixing base plate welded in the bottom of frame for reinforcement.



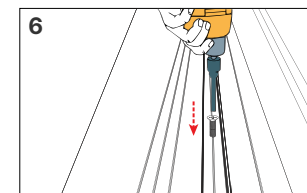
Remove screw from cover bar.



Put the rope edge into sail track bar.



Tension in the order of top, left, right and bottom.



Put the cover bar back on, fix it with screw.

## PROJECTS

